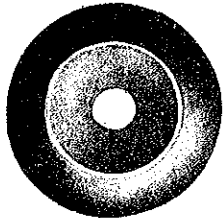




Piston Packing

for

Type PC Controllers



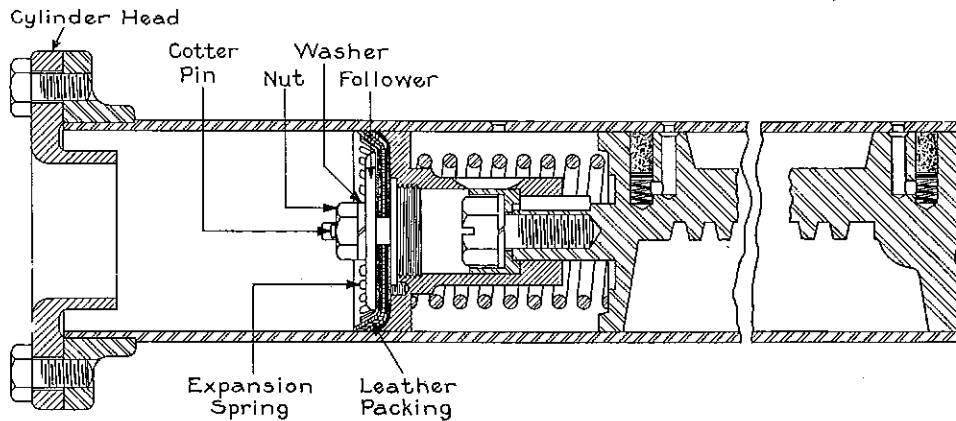
Sample of Piston Packing

PROPER inspection and maintenance of the piston packing on PC controllers and other apparatus having air-operated mechanisms is necessary for the successful operation of these devices. Not only are these leather packing cups or washers made of the finest selected leather but great care is taken in their treatment and manufacture. Inferior washers should not be substituted.

As is well known, the production of a satisfactory piston packing is a very difficult manufacturing problem. In the production of G-E packings, the first step is to treat the plain leather washers. This is done by immersing them in a pan of liquid grease which is placed in an electric oven where a definite temperature is maintained for four hours. At the end of this time the washers are removed from the oven and divided into groups of three, care being taken to see that the thickness of each group is the same. The groups of washers are placed in molds which compress them and give them a cup shaped effect. The molds are then placed in another oven for four hours where a definite temperature is maintained. After this drying out process the washers are removed from the molds and placed in forms where they are cut and trimmed to shape. In this way washers are made which insure satisfactory service and maintain the high standard of the apparatus itself.

It will be noted that after the first treating process, the washers are kept in groups of three, inasmuch as the completed packing consists of three individual washers. These groups should not be divided subsequently, and attempts made to make other complete packings from individual washers of different groups.

It is comparatively easy to replace these washers when necessary. The main cylinder head should be removed and the cam shaft revolved until the piston head is near enough to the outer end of the cylinder to be accessible. The cotter pin, nut, washer, follower, expansion spring and leather packing cups may then be removed in the order named.



General Electric Company, Schenectady, N. Y.

SALES OFFICES IN ALL LARGE CITIES



GENERAL ELECTRIC COMPANY

GENERAL OFFICE: SCHENECTADY, N. Y.

SALES OFFICES (Address nearest Office)

Akron, Ohio.....	159 South Main Street	Los Angeles, Cal.....	724 South Spring Street
Atlanta, Ga.....	123 Spring Street	Louisville, Ky.....	455 South Fourth Street
Baltimore, Md.....	39 W. Lexington Street	Memphis, Tenn.....	130 Madison Avenue
Birmingham, Ala.....	2600 First Avenue	Milwaukee, Wis.....	217 Sycamore Street
Bluefield, W. Va.....	104 Federal Street	Minneapolis, Minn.....	107 South Fifth Street
Boston, Mass.....	84 State Street	Nashville, Tenn.....	234 Third Avenue, North
Buffalo, N. Y.....	39 East Genesee Street	Newark, N. J.....	671 Broad Street
Butte, Mont.....	40 East Broadway	New Haven, Conn.....	129 Church Street
Canton, Ohio.....	700 Tuscarawas Street	New Orleans, La.....	921 Canal Street
Charleston, W. Va.....	201 Capitol Street	New York, N. Y.....	120 Broadway
Charlotte, N. C.....	200 South Tryon Street	Niagara Falls, N. Y.....	201 Falls Street
Chattanooga, Tenn.....	536 Market Street	Oklahoma City, Okla.....	1 West Grand Avenue
Chicago, Ill.....	230 South Clark Street	Omaha, Neb.....	401 South 16th Street
Cincinnati, Ohio.....	632 Vine Street	Philadelphia, Pa.....	1321 Walnut Street
Cleveland, Ohio.....	925 Euclid Avenue	Pittsburgh, Pa.....	529 Smithfield Street
Columbus, Ohio.....	81 East State Street	Portland, Ore.....	329 Alder Street
Dallas, Tex.....	1801 North Lamar Street	Providence, R. I.....	76 Westminster Street
Davenport, Iowa.....	111 E. Third Street	Richmond, Va.....	700 East Franklin Street
Dayton, Ohio.....	25 North Main Street	Rochester, N. Y.....	130 Main Street East
Denver, Colo.....	819 17th Street	St. Louis, Mo.....	112 North 4th Street
Des Moines, Iowa.....	904 West Walnut Street	Salt Lake City, Utah.....	200 South Main Street
Detroit, Mich.....	719 Griswold Street	San Antonio, Tex.....	601 Navarro Street
Duluth, Minn.....	14 West Superior Street	San Francisco, Cal.....	116 New Montgomery Street
Elmira, N. Y.....	342 East Water Street	Seattle, Wash.....	811 First Avenue
El Paso, Tex.....	109 North Oregon Street	Spokane, Wash.....	423 Riverside Avenue
Eric, Pa.....	10 East Twelfth Street	Springfield, Mass.....	387 Main Street
Fort Wayne, Ind.....	1635 Broadway	Syracuse, N. Y.....	113 South Salina Street
Grand Rapids, Mich.....	201 Monroe Avenue	Tacoma, Wash.....	950 Pacific Avenue
Greenville, S. C.....	119 S. Main Street	Terre Haute, Ind.....	701 Wabash Avenue
Hartford, Conn.....	18 Asylum Street	Toledo, Ohio.....	520 Madison Avenue
Houston, Tex.....	1016 Walker Avenue	Tulsa, Okla.....	409 South Boston Street
Indianapolis, Ind.....	106 North Illinois Street	Utica, N. Y.....	239 Genesee Street
Jackson, Mich.....	308 Francis Street	Washington, D. C.....	1405 G Street N. W.
Jacksonville, Fla.....	108 West Forsyth Street	Waterbury, Conn.....	195 Grand Street
Kansas City, Mo.....	1004 Baltimore Avenue	Worcester, Mass.....	340 Main Street
Knoxville, Tenn.....	602 South Gay Street	Youngstown, Ohio.....	44 Central Square
Little Rock, Ark.....	223 West Second Street		

Motor Dealers and Lamp Agencies in all large cities and towns.

For Hawaiian business refer to W. A. Ramsay, Ltd., Honolulu.

SERVICE SHOPS

Atlanta.....	91 Glenn Street	Minneapolis.....	410 Third Ave., North
Chicago.....	509 E. Illinois Street	New York.....	627 Greenwich Street
Dallas.....	1801 N. Lamar Street	Oakland.....	5441 E. 14th Street
Erie.....	East Lake Road	Philadelphia.....	1223 Washington Avenue
Kansas City.....	819 E. 19th Street	Schenectady.....	1 River Road
Los Angeles.....	2330 E. 52nd Street	Seattle.....	1508 Fourth Ave. S.
St. Louis.....	1007-1009 Spruce Street		

Distributors for the General Electric Company outside of the United States
INTERNATIONAL GENERAL ELECTRIC COMPANY, INC.

New York City
120 Broadway

General Sales Offices
Schenectady, N. Y.

London
Crown House, Aldwych, W. C. 2

FOREIGN OFFICES AND ASSOCIATED COMPANIES

ARGENTINA: General Electric S. A., Buenos Aires
 AUSTRALIA: Australian General Electric Company, Ltd., Sydney and Melbourne
 AUSTRIA: Joh. Kremenezky Fabrik Für Elektrische Glühlampen, Vienna; Elektrische Glühlampenfabrik "Watt" A. G., Vienna
 BELGIUM AND COLONIES: Societe d'Electricite et de Mecanique (Procedes Thomson-Houston & Carcel) Societe Anonyme, Brussels, Belgium
 BRAZIL: General Electric, S. A., Rio de Janeiro and Sao Paulo
 CANADA: Canadian General Electric Company, Ltd., Toronto, Ontario
 CHILE: International Machinery Company, Santiago, Antofagasta and Valparaiso; Nitrate Agencies, Ltd., Iquique
 CHINA: Anderssen, Meyer & Company, Ltd., Shanghai. International General Electric Company (General Office for the Far East excluding Japan and China), Shanghai
 COLOMBIA: Wesselhoeft & Poor, Bogota, Barranquilla, Medellin and Bucaramanga
 CUBA: General Electric Company of Cuba, Havana and Santiago
 DUTCH EAST INDIES: International General Electric Company, Inc., Soerabaia, Java
 ECUADOR: Guayaquil Agencies Co., Guayaquil
 EGYPT: British Thomson-Houston Company, Ltd., Cairo
 FRANCE AND COLONIES: Compagnie Francaise Thomson-Houston, Paris; Compagnie des Lampes, Paris; International General Electric Co., Inc., Paris
 GREAT BRITAIN AND IRELAND: British Thomson-Houston Company, Ltd., Rugby, England; International General Electric Company, Inc., Crown House, Aldwych, London, W. C. 2
 GREECE AND COLONIES: Compagnie Hellenique d'Electricite, Athens
 HOLLAND: Mijnsen & Co., Amsterdam
 HUNGARY: United Incandescent Lamps and Electrical Company, Ltd., Ujpest, near Budapest; Ungarische Wolframlampen Fabrik—Joh. Kremenezky A. G. Budapest
 INDIA: International General Electric Company, Inc., Calcutta and Bombay
 ITALY AND COLONIES: Compagnia Generale Di Electricita, Milan; Fabbrica Lampade Itala, Milan; Societa Edison per la Fabbricazione delle Lampade, Milan
 JAPAN: Shibaura Engineering Works, Tokyo; Tokyo Electric Company, Ltd., Kawasaki, Kanagawa-Ken; International General Electric Co., Inc., Tokyo, Osaka
 MEXICO: General Electric S. A., City of Mexico, Guadalajara and Monterey
 NEW ZEALAND: National Electrical and Engineering Company, Ltd., Auckland, Dunedin, Christchurch and Wellington
 PARAGUAY: General Electric, S. A., Buenos Aires, Argentina
 PERU: W. R. Grace & Company, Lima
 PHILIPPINE ISLANDS: Pacific Commercial Company, Manila
 PORTO RICO: International General Electric Company, Inc., San Juan
 PORTUGAL AND COLONIES: Sociedad Iberica de Construcões Electricas Lda., Lisbon
 SOUTH AFRICA: South African General Electric Company, Ltd., Johannesburg and Capetown
 SPAIN AND COLONIES: Sociedad Iberica de Construcciones Electricas, Madrid and Barcelona
 URUGUAY: General Electric, S. A., Montevideo
 VENEZUELA: Wesselhoeft & Poor, Caracas