



Improved Construction and Maintenance of Type RG Resistors

Two changes which have recently been made in the construction of Type RG Resistors and suggestions as to the maintenance of these resistors are outlined in this descriptive sheet.

The Type RG Resistor as originally built was equipped with steel sleeves and cupped washers or ferrules for spacing the grids and protecting the mica insulation. While this construction had certain advantages in cushioning the grids, some trouble was experienced from the burning or fusing of these sleeves or ferrules and the resistors as now assembled omit these parts altogether.

In repairing the RG Resistors it is recommended that thicker mica washers be used to compensate for the omission of the sleeves and ferrules. It is also advisable to use a .01 in. thick soft copper washer between all current-carrying surfaces, as service tests have shown this to be an improvement. The copper washer used on Form A to A-4, E to E-2, F to F-1 and G to G-3 Resistors, inclusive, is $1\frac{3}{4}$ inch outside diameter, and is covered by Cat. No. 1456825; on the Form B to B-50, and J-1 to J-17, inclusive, use washers $2\frac{1}{4}$ -inch outside diameter, Cat No. 1456895.

Following are listed the different forms of the RG Resistors together with steel ferrules and washers to be omitted and copper washers to be added.

Type and Form of Resistor	Omit Ferrules Cat. Nos.	Omit Spacing Sleeves Cat. Nos.	Add Copper Washers Between Grids Cat. Nos.
RG Forms A, C, E, F, G.	116120 116121	116125-41 inc. 201209	1456825
RG Forms B, D, J.....	201136 201193 201195	201138-42 inc. 201196-98 inc.	1456895

A second change has been made in the mica washer assembly at the ends of the tie rods. Fig. 2 shows these washers split into three parts, on the outside two large diameter washers and in between these a small diameter washer. This change greatly increases the creepage distance between the grids and the ground. It is recommended that this combination of three washers be substituted for the former arrangement. If the old washers are split it will only be necessary to obtain the smaller diameter washers.

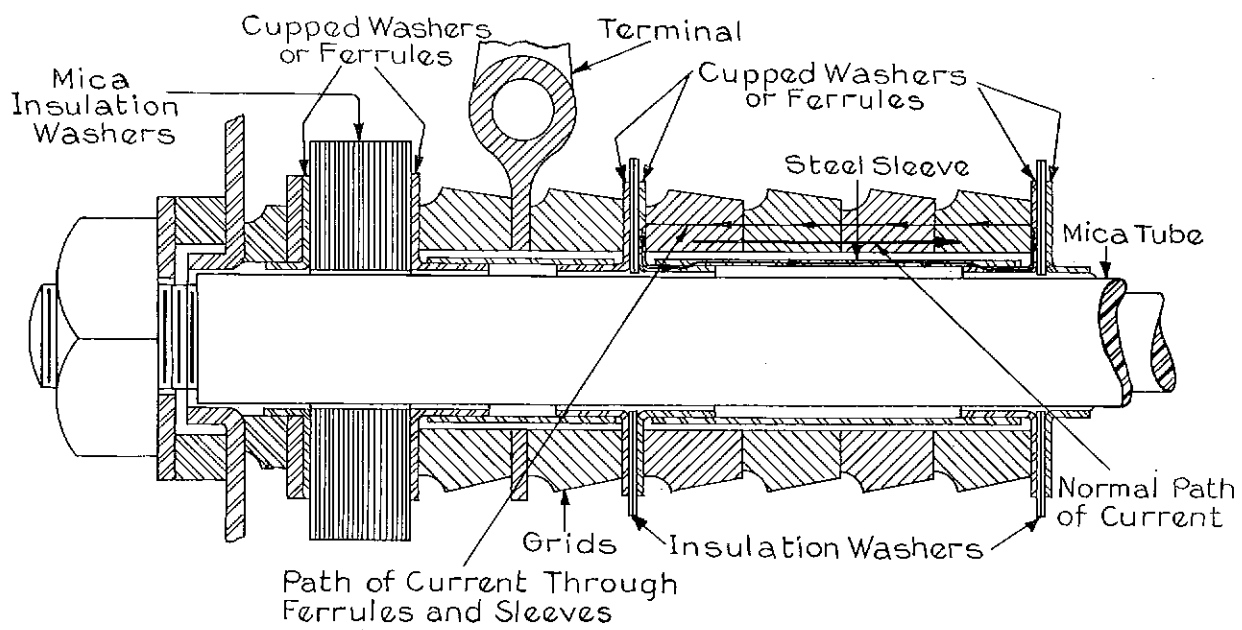
Below is a list of the old and improved type mica washers.

Type and Form of Resistor	Former Mica Spacing Collar Cat. Nos.	IMPROVED WASHER	
		Small Diameter Cat. Nos.	Large Diameter Cat. Nos.
RG Forms A, C, E, F, G.	116119	1427899	1428737
RG Forms B, J.....	201135	2430007	2430008
RG Form D.....	201192	2430007	2430008

GENERAL ELECTRIC COMPANY
SCHENECTADY, N. Y.
Sales Offices in All Large Cities



Section Showing Type RG Resistor as Originally Constructed



Improved Construction

