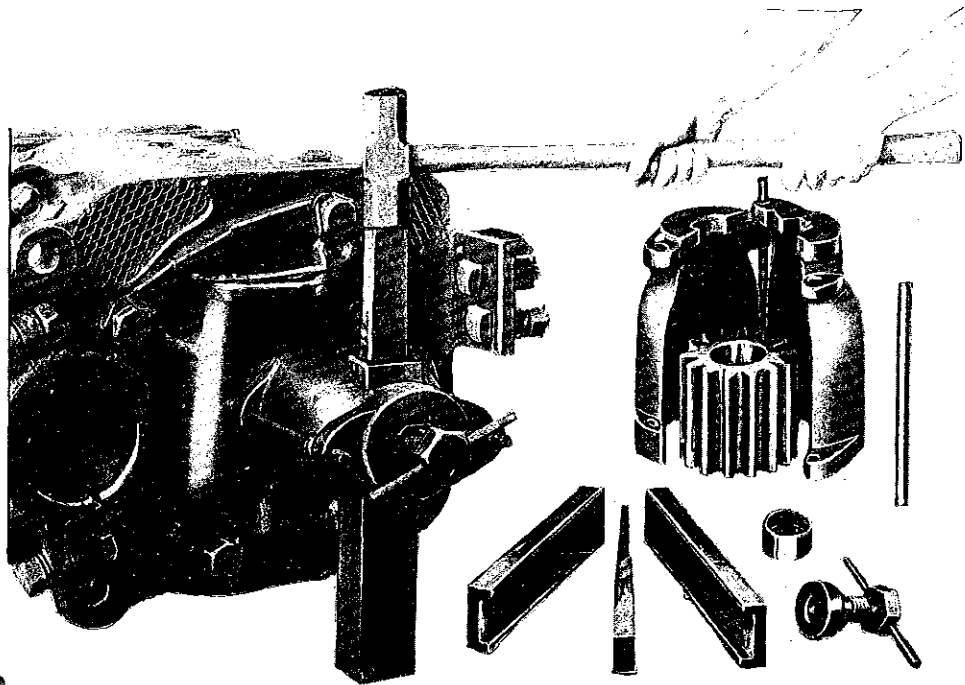




Pinion Pullers for Railway Motors

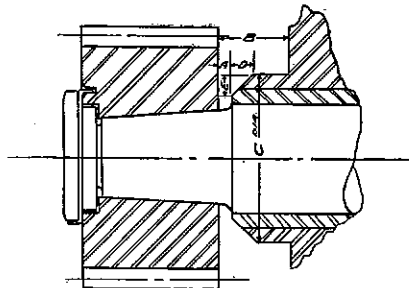


Railway Motor Pinion Puller Assembled (left) and Disassembled

The G-E Pinion Puller illustrated above consists of two half rings, each half being provided with lugs through which hinge pins are placed to hold the halves firmly together. The principle involved in this pinion puller is the old time wedging idea; but in this case the wedge, instead of being used where it can damage bearings and housings, is applied at a place where it can do no damage. The puller ring grips all the teeth of the pinion equally, thereby eliminating the possibility of localizing the removing stresses on a small number of teeth.

The component parts of the pinion puller are the puller ring, the pressure cap, the jack screw, the wedge box, the wedge, and the hinge pins. The wedges, jack screw, etc., are the same for all pullers; the puller rings and pressure caps vary with the diameter of the pinion for which the puller is required. A common ring may be used in some cases for pinions varying only slightly in diameter.

In ordering pinion pullers for G-E railway motors, be sure to specify the type and form of each motor, and the outside diameter of the pinions involved. For other motors, the dimensions indicated in the cut below by the letters, A, B, C, etc., should be given in addition to the outside diameter and face of the pinion.



General Electric Company, Schenectady, N. Y.

SALES OFFICES IN ALL LARGE CITIES



GENERAL ELECTRIC COMPANY

GENERAL OFFICE: SCHENECTADY, N. Y.

SALES OFFICES (Address nearest Office)

Akron, Ohio	159 South Main Street	Los Angeles, Cal.	724 South Spring Street
Atlanta, Ga.	123 Spring Street	Louisville, Ky.	455 South Fourth Street
Baltimore, Md.	39 W. Lexington Street	Memphis, Tenn.	130 Madison Avenue
Birmingham, Ala.	2000 First Avenue	Milwaukee, Wis.	217 Sycamore Street
Bluefield, W. Va.	104 Federal Street	Minneapolis, Minn.	107 South Fifth Street
Boston, Mass.	84 State Street	Nashville, Tenn.	234 Third Avenue, North
Buffalo, N. Y.	39 East Genesee Street	Newark, N. J.	671 Broad Street
Butte, Mont.	40 East Broadway	New Haven, Conn.	129 Church Street
Canton, Ohio	700 Tuscarawas Street	New Orleans, La.	921 Canal Street
Charleston, W. Va.	201 Capitol Street	New York, N. Y.	120 Broadway
Charlotte, N. C.	200 South Tryon Street	Niagara Falls, N. Y.	201 Falls Street
Chatanooga, Tenn.	536 Market Street	Oklahoma City, Okla.	1 West Grand Avenue
Chicago, Ill.	230 South Clark Street	Omaha, Neb.	401 South 16th Street
Cincinnati, Ohio	632 Vine Street	Philadelphia, Pa.	1321 Walnut Street
Cleveland, Ohio	925 Euclid Avenue	Pittsburgh, Pa.	529 Smithfield Street
Columbus, Ohio	81 East State Street	Portland, Ore.	329 Alder Street
Dallas, Tex.	1801 North Lamar Street	Providence, R. I.	76 Westminster Street
Davenport, Iowa	213 Main St.	Richmond, Va.	700 East Franklin Street
Dayton, Ohio	25 North Main Street	Rochester, N. Y.	130 Main Street East
Denver, Colo.	819 17th Street	St. Louis, Mo.	112 North 4th Street
Des Moines, Iowa	904 West Walnut Street	Salt Lake City, Utah	200 South Main Street
Detroit, Mich.	719 Griswold Street	San Antonio, Tex.	601 Navarro Street
Duluth, Minn.	14 West Superior Street	San Francisco, Cal.	116 New Montgomery Street
Elmira, N. Y.	342 East Water Street	Seattle, Wash.	811 First Avenue
El Paso, Tex.	109 North Oregon Street	Spokane, Wash.	423 Riverstide Avenue
Erie, Pa.	10 East Twelfth Street	Springfield, Mass.	387 Main Street
Fort Wayne, Ind.	1635 Broadway	Syracuse, N. Y.	113 South Salina Street
Grand Rapids, Mich.	201 Monroe Avenue	Tacoma, Wash.	930 Pacific Avenue
Greenville, S. C.	119 S. Main Street	Terre Haute, Ind.	701 Wabash Avenue
Hartford, Conn.	18 Asylum Street	Toledo, Ohio	520 Madison Avenue
Houston, Tex.	1016 Walker Avenue	Trenton, N. J.	145 East State Street
Indianapolis, Ind.	106 North Illinois Street	Tulsa, Okla.	409 South Boston Street
Jackson, Mich.	308 Francis Street	Utica, N. Y.	239 Genesee Street
Jacksonville, Fla.	108 West Forsyth Street	Washington, D. C.	1405 G Street N. W.
Kansas City, Mo.	1004 Baltimore Avenue	Waterbury, Conn.	195 Grand Street
Knoxville, Tenn.	602 South Gay Street	Worcester, Mass.	340 Main Street
Little Rock, Ark.	223 West Second Street	Youngstown, Ohio	44 Central Square

Motor Dealers and Lamp Agencies in all large cities and towns.

For Hawaiian business refer to W. A. Ramsay, Ltd., Honolulu.

SERVICE SHOPS

Atlanta	18 Stewart Avenue	Minneapolis	107 South Fifth Street
Chicago	509 E. Illinois Street	New York	627 Greenwich Street
Dallas	1801 N. Lamar Street	Okaland	541 E. 14th Street
Erie	East Lake Road	Philadelphia	1223 Washington Avenue
Kansas City	19 Campbell Street	Schenectady	1 River Road
Los Angeles	1719 N. Spring Street	Seattle	1508 Fourth Ave. S.
St. Louis			1007-1009 Spruce Street

Distributors for the General Electric Company outside of the United States
INTERNATIONAL GENERAL ELECTRIC COMPANY, INC.

New York City
120 Broadway

General Sales Offices
Schenectady, N. Y.

London
Crown House, Aldwych, W. C. 2

FOREIGN OFFICES AND ASSOCIATED COMPANIES

ARGENTINA: General Electric S. A., Buenos Aires
 AUSTRALIA: Australian General Electric Company, Ltd., Sydney and Melbourne
 AUSTRIA: Joh. Kremenezky Fabrik Für Elektrische Glühlampen, Vienna; Elektrische Glühlampenfabrik "Watt" A. G., Vienna
 BELGIUM AND COLONIES: Societe d'Electricite et de Mecanique (Procedes Thomson-Houston & Carels) Societe Anonyme, Brussels, Belgium
 BRAZIL: General Electric, S. A., Rio de Janeiro and Sao Paulo
 CANADA: Canadian General Electric Company, Ltd., Toronto, Ontario
 CHILE: International Machinery Company, Santiago, Antofagasta and Valparaiso; Nitrate Agencies, Ltd., Iquique
 CHINA: Andersen, Meyer & Company, Ltd., Shanghai. International General Electric Company (General Office for the Far East excluding Japan and China), Shanghai
 COLOMBIA: Wesselhoeff & Poor, Bogota, Barranquilla, Medellin and Bucaramanga
 CUBA: General Electric Company of Cuba, Havana and Santiago
 DUTCH EAST INDIES: International General Electric Company, Inc., Soerabaia, Java
 ECUADOR: Guayaquil Agencies Co., Guayaquil
 EGYPT: British Thomson-Houston Company, Ltd., Cairo
 FRANCE AND COLONIES: Compagnie Francaise Thomson-Houston, Paris; Compagnie des Lampes, Paris; International General Electric Co., Inc., Paris
 GREAT BRITAIN AND IRELAND: British Thomson-Houston Company, Ltd., Rugby, England; International General Electric Company, Inc., Crown House, Aldwych, London, W. C. 2
 GREECE AND COLONIES: Compagnie Hellenique d'Electricite, Athens
 HOLLAND: Mijnsen & Co., Amsterdam
 HUNGARY: United Incandescent Lamps and Electrical Company, Ltd., Ujpest, near Budapest; Ungarische Wolframlampen Fabrik—Joh. Kremenezky A. G. Budapest
 INDIA: International General Electric Company, Inc., Calcutta and Bombay, Cawnpore and Bangalore, Mysore
 ITALY AND COLONIES: Compagnia Generale Di Elettricit, Milan; Fabbrica Lampade Itala, Milan; Societa Edison per la Fabbricazione delle Lampade, Milan
 JAPAN: Shibaura Engineering Works, Tokyo; Tokyo Electric Company, Ltd., Kawasaki, Kanagawa-Ken; International General Electric Co., Inc., Kobe, Tokyo
 MEXICO: General Electric S. A., City of Mexico, Guadalajara and Monterey
 NEW ZEALAND: National Electrical and Engineering Company, Ltd., Auckland, Dunedin, Christchurch and Wellington
 PARAGUAY: General Electric, S. A., Buenos Aires, Argentina
 PERU: W. R. Grace & Company, Lima
 PHILIPPINE ISLANDS: Pacific Commercial Company, Manila
 PORTO RICO: International General Electric Company, Inc., San Juan
 PORTUGAL AND COLONIES: Sociedad Iberica de Construccoes Electricas Lda., Lisbon
 SOUTH AFRICA: South African General Electric Company, Ltd., Johannesburg and Capetown
 SPAIN AND COLONIES: Sociedad Iberica de Construcciones Electricas, Madrid and Barcelona
 URUGUAY: General Electric, S. A., Montevideo
 VENEZUELA: Wesselhoeff & Poor, Caracas