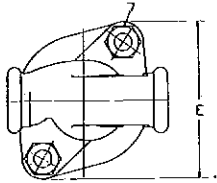
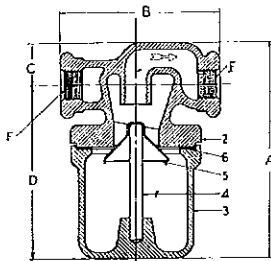


Centrifugal Dirt Collectors

DIMENSIONS AND NET WEIGHTS.

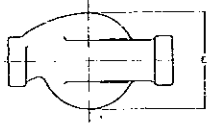
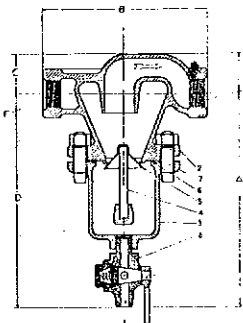


Size	A	B	C	D	E	F	Net Wgt.
1/2"	6 1/16"	4 1/2"	1 3/16"	4 7/8"	4 7/16"	1/2" Pipe	6 3/4 lbs.
3/4"	8"	7 1/2"	1 13/16"	6 3/16"	4 3/8"	3/4" Pipe	10 1/4 lbs.
1"	8"	7 1/2"	1 13/16"	6 3/16"	4 3/8"	1" Pipe	10 3/4 lbs.

Ref. No.	NAME OF PART.	Piece No.		
		1/2"	3/4"	1"
	Centrifugal Dirt Collector Complete	C466	C2315	C2314
2	Body	C459	C2317	C566
3	Dirt Chamber	C462	C462	C462
4	Valve Stem	C465	C465	C465
5	Valve	C464	C464	C464
6	Gasket	C463	C463	C463
7	Bolt and Nut (2 required)	C468	C468	C468

Centrifugal Dirt Collector with 1/2" Drain Cock

DIMENSIONS AND NET WEIGHTS.

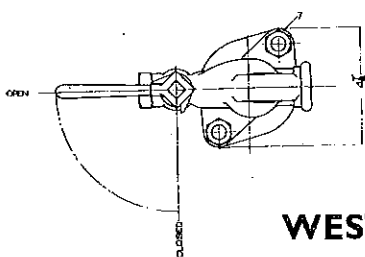
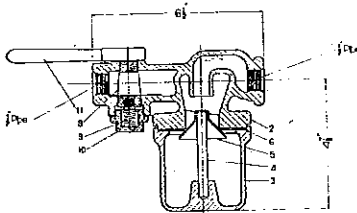


Size	A	B	C	D	E	F	Net Wgt.
1/2"	9 9/16"	4 1/2"	1 3/16"	8 3/8"	4 7/16"	1/2" Pipe	8 1/4 lbs.
3/4"	11 1/4"	7 1/2"	1 13/16"	9 11/16"	4 3/8"	3/4" Pipe	12 1/4 lbs.
1"	11 1/2"	7 1/2"	1 13/16"	9 11/16"	4 3/8"	1" Pipe	12 1/2 lbs.

Ref. No.	NAME OF PART.	Piece No.		
		1/2"	3/4"	1"
	Centrifugal Dirt Collector Complete	C1980	C2316	C606
2	Body	C459	C2317	C566
3	Dirt Chamber	C478	C478	C478
4	Valve Stem	C465	C465	C465
5	Valve	C464	C464	C464
6	Gasket	C463	C463	C463
7	Bolt and Nut (2 required)	C468	C468	C468
8	Drain Cock (for details see Section 11, List No. 2)	581	581	581

Combined Cut Out Cock and Centrifugal Dirt Collector

Net Weight, 8 1/2 lbs.



Ref. No.	NAME OF PART.	Pc. No.	
	Centrifugal Dirt Collector Complete	C1995	
2	Body	C1994	
3	Dirt Chamber	C462	
4	Valve Stem	C465	
5	Valve	C464	
6	Gasket	C463	
7	Bolt and Nut (2 required)	C468	
8	Cock Plug	3401	
9	Cock Spring	3394	
10	Cock Cap	3395	
11	Cock Handle	3402	C. 3088

Orders should state PIECE NUMBER and NAME of Part.

WESTINGHOUSE BRAKE (AUSTRALASIA) PTY. LTD.

Head Office and Works: **CONCORD WEST, N.S.W.**

POSTAL ADDRESS: Box 21, P.O., Burwood, New South Wales.

THE MUNICIPAL TRAMWAYS TRUST, ADELAIDE

Reception Correspondence office 30/9/49

accompanying letter from

William James Bracke (Aust)

No. 207022 D. 11. 27. 49