

COPYRIGHT, 1912, BY THE

Westinghouse Traction Brake Company.



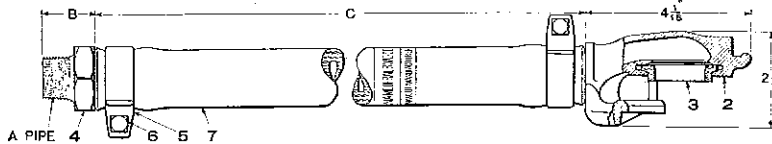
Hose, Couplings, Fittings.

Part Catalog No. T 3516-3.

August, 1917.

(SUPERSEDING ISSUE OF DECEMBER, 1912.)

HOSE AND COUPLINGS.



Pc. No.	Type of Coupling	Dia. of Hose	Size of Nipple A	B	C
32081	EP3	3/4"	3/4"	1 3/16"	22"
32077	FP3	3/4"	3/4"	1 3/16"	22"
32091	LP3	3/4"	3/4"	1 3/16"	22"
46578	FP4	1 1/8"	1"	1 3/16"	22"
46283	FP4	1 1/8"	1 1/4"	1 3/16"	22"
46369	LP4	1 1/8"	1"	1 3/16"	22"
46252	HP4	1 1/8"	3/4"	1 3/16"	22"
46242	FP5	1 1/8"	1 1/4"	1 3/16"	22"

Hose and Couplings, complete	EP-3	FP-3	LP-3	FP-4	LP-4	HP-4	FP-5	Price Per Pair	Net Weight Lbs. Per Pr.
1 3/4" x 22" Hose and Coupling with 3/4" Nipple (Note A)	32081	32077	32091					\$4.00	7 1/4
1 1/2" x 22" Hose and Coupling with 1" Nipple (Note B)				46578	46369			4.00	10 1/2
1 1/8" x 22" Hose and Coupling with 3/4" Nipple (Note B)						46252		4.00	10
1 1/4" x 22" Hose and Coupling with 1 1/4" Nipple (Note B)				46283				4.00	11
1 3/8" x 22" Hose and Coupling with 1 1/4" Nipple (Note C)							46242	4.25	12

Ref. No.	Hose and Couplings, Details	Piece No.	Price
2	EP-3 Hose Coupling, complete (includes 3)	11122	Per Pair \$1.25
2	FP-3 Hose Coupling, complete (includes 3)	10710	" 1.25
2	LP-3 Hose Coupling, complete (includes 3)	13387	" 1.25
2	FP-4 Hose Coupling, complete (includes 3)	46126	" 1.25
2	LP-4 Hose Coupling, complete (includes 3)	46332	" 1.25
2	HP-4 Hose Coupling, complete (includes 3)	46102	" 1.25
2	FP-5 Hose Coupling, complete (includes 3)	46100	" 1.25
3	Hose Coupling Gasket	3279	Each .04
4	3/4" x 3/4" Threaded Hose Nipple	7968	" .10
4	1 1/8" x 3/4" Threaded Hose Nipple	46169	" .10
4	1 1/8" x 1" Threaded Hose Nipple	46175	" .12
4	1 1/8" x 1 1/4" Threaded Hose Nipple	46164	" .12
4	1 1/8" x 1 1/2" Threaded Hose Nipple	46223	" .12
5	Galvanized Annealed Steel Hose Clamp only for 3/4" Hose	31104	" .04
5	Galvanized Annealed Steel Hose Clamp only for 1 1/8" Hose	28221	" .04
5	Galvanized Annealed Steel Hose Clamp only for 1 3/8" Hose	26378	" .04
6	Hose Clamp Bolt and Nut for 3/4" Clamp	15884	" .01
6	Hose Clamp Bolt and Nut for 1 1/8" and 1 3/8" Clamp	4866	" .01
7	3/4" x 22" Hose	8643	*
7	1 1/8" x 22" Hose	2243	*
7	1 3/8" x 22" Hose	2463	*

- NOTE A—3/4" x 22" Hose with various couplings is used with the following equipments:
 EP-3: Standard for SME Equipment for both lines of pipe.
 FP-3: Not standard, but sometimes used for Brake Pipe Connection with equipments other than SME. Furnished only when specified.
 LP-3: Standard for Control Pipe or Reservoir Pipe Connection. Furnished only with equipments including Control Pipe and should be installed on left-hand side of drawbar.
- NOTE B—1 1/8" x 22" Hose with various couplings is used with the following equipments:
 FP-4: Standard for Brake Pipe Connection with all equipments except SME. If desired, will be furnished with nipple.
 For 1 1/4" pipe for use with Electric Locomotives having 1 1/4" Brake Pipe.
 LP-4: Not standard, but sometimes used for Control Pipe or Reservoir Pipe Connection. Furnished only when specified.
 HP-4: Standard for Signal Pipe Connection. Not used or supplied for any other purpose.
- NOTE C—1 3/8" x 22" Hose with FP-5 Coupling. Used for Freight Cars which are interchanged with Steam Railroads and also on some Electric Locomotives having 1 1/4" Brake Pipe.
- NOTE D—Length of Hose. Coupling Hose is always furnished of standard 22-inch length unless otherwise specified on orders. For special lengths, when required, prices will be quoted upon application.
- NOTE E—Hose Coupling Designation consists of two letters and a figure. The first letter indicates the group of couplings which can be coupled together. The second letter indicates the style of coupling; and the figure, the size of hose or pipe in quarters of an inch.
- NOTE F—Hose Nipples. In the designation of Hose Nipples, the first dimension is the inside diameter of hose, and the second dimension the size of pipe.
- *NOTE G—Prices will be quoted upon application.

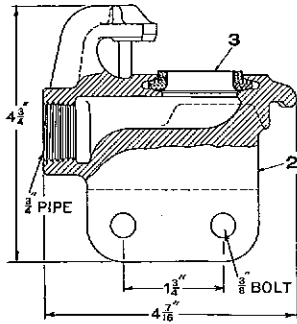
Orders must give PIECE NUMBER and NAME of part wanted.

All Leather and Rubber Goods
Subject to Quotations.

T 3516-3

DRAWBAR HOSE COUPLINGS.

ET-3 and LT-3 Hose Couplings are used with any equipment where it is necessary to rigidly attach hose coupling to swinging drawbar, and use Hose Jumper between cars. The ET-3 Coupling is used for the **brake pipe** connection and is placed on the right-hand side of the drawbar. The LT-3 Coupling is used for the **control or reservoir pipe** and is placed on the left-hand side of the drawbar.



ET-3 HOSE COUPLING.

Piece No. 10904. ET-3 Hose Coupling, complete,
per pair Price, \$1.25

Pc. No.	Ref. No.		Price
3279	3	Hose Coupling Gasket	\$.04

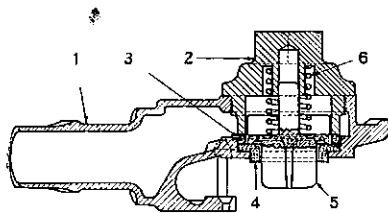
LT-3 HOSE COUPLING.

Piece No. 13382. LT-3 Hose Coupling, complete,
per pair Price, \$1.25

Pc. No.	Ref. No.		Price
3279	3	Hose Coupling Gasket	\$.04

MK-4 HOSE COUPLING.

The MK-4 Hose Coupling, formerly sometimes used for reservoir pipe connection, is no longer regularly furnished.

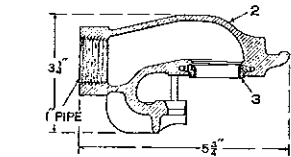


Piece No. 46344. MK-4 Hose Coupling,
complete, per pair . Price, \$2.00

Pc. No.	Ref. No.		Price
4487	2	Cap	\$.35
5760	3	Washer10
3313	4	Hose Coupling Gasket04
5759	5	Valve20
5761	6	Spring02

FS-4 HOSE COUPLINGS.

Furnished only when ordered.

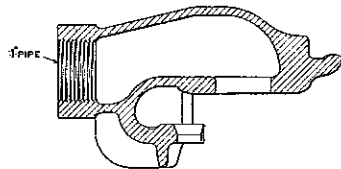


Net Weight, per pair, 5 lbs.

Pc. No.	Ref. No.		Price
46139	2	FS-4 Hose Coupling, with shank, tapped for 1" pipe, complete (includes 3) per pair	\$1.25
3279	3	Hose Coupling Gasket04

FV-4 CHARGING HOSE COUPLING.

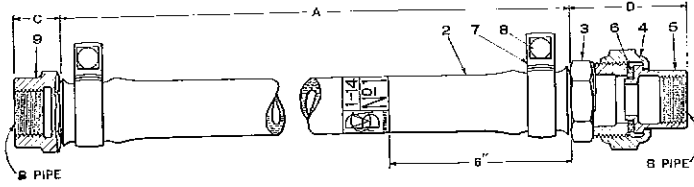
Supplied with Storage Brake Equipments.



Piece No. 10908. FV-4 Charging Hose Coupling
(tapped for 1" pipe) complete,
per pair Price, \$1.60

Orders must give PIECE NUMBER and NAME of part wanted.

HOSE CONNECTIONS.



Pc. No.	Dia. of Hose	A	B	C	D
32086	3/4"	22"	3/4"	1"	2 1/2"
46622	1 1/8"	22"	1"	1 3/8"	2 3/4"
46673	1 3/8"	22"	1 1/4"	2 1/8"	2 9/16"
47080	1 3/4"	22"	1 1/2"	1 3/8"	3"

Hose Connections Complete	Piece Number				Price Each	Net Weight Lbs. Each
3/4" x 22" Drawbar Hose with Tapped and Union Nipples for 3/4" Pipe	32086	\$1.75	3 1/2
1 1/8" x 22" Drawbar Hose with Tapped and Union Nipples for 1" Pipe	46622	1.75	3 3/4
1 3/8" x 22" Hose with Union Nipple on each End for 1 1/2" Pipe	46673	46673	2.00	3 3/4
1 3/4" x 22" Hose with Tapped and Union Nipples for 1 3/4" Pipe	47080	47080	2.10	4

Ref. No.	Hose Connections, Details						
2	Hose	Size	3/4" x 22"	1 1/8" x 22"	1 1/8" x 22"	1 3/8" x 22"	
		Pc. No.	8643	2243	2243	2463	
		Price	*	*	*	*	
3	Union Hose Nipple	Size	3/4" x 3/4"	1 1/8" x 1"	1 1/8" x 1 1/2"	1 3/8" x 1 1/4"	
		Pc. No.	8647	46158	46171	46267	
		Price	\$.12	.15	.12	.25	
4	Union Nut	Size	3/4"	1"	1 1/2"	1 1/4"	
		Pc. No.	3306	1749	2165	2154	
		Price	\$.10	.10	.05	.12	
5	Union Swivel	Size	3/4"	1"	1 1/2"	1 1/4"	
		Pc. No.	3307	1750	2166	2155	
		Price	\$.10	.10	.04	.12	
6	Union Gasket	Size	3/4"	1"	1 1/2"	1 1/4"	
		Pc. No.	3308	1755	2204	2183	
		Price	\$.02	.02	.01	.03	
7	Hose Clamp	Size	3/4"	1 1/8"	1 1/8"	1 3/8"	
		Pc. No.	31104	28221	28221	26378	
		Price	\$.04	.04	.04	.04	
8	Hose Clamp Bolt and Nut	Size	3/4"	1 1/8"	1 1/8"	1 3/8"	
		Pc. No.	15384	4866	4866	4866	
		Price	\$.01	.01	.01	.01	
9	Tapped Hose Nipple	Size	3/4" x 3/4"	1 1/8" x 1"	1 3/8" x 1 1/4"	
		Pc. No.	14773	46180	46273	
		Price	\$.12	.1520	
	Union Hose Nipple, complete (includes 3, 4, 5 and 6)	Size	3/4" x 3/4"	1 1/8" x 1"	1 1/8" x 1 1/2"	1 3/8" x 1 1/4"	
		Pc. No.	19923	46159	46172	46268	
		Price	\$.35	.35	.25	.50	

NOTE A—In the designation of Hose Nipples, the first dimension is the inside diameter of the hose, and the second dimension the size of pipe.

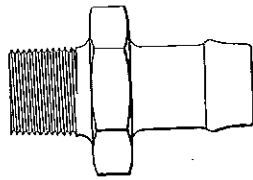
*NOTE B—Prices will be quoted upon application.

Orders must give PIECE NUMBER and NAME of part wanted.

All Leather and Rubber Goods
Subject to Quotation
HOSE NIPPLES.

T 3516-3

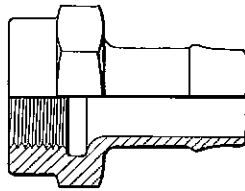
THREADED HOSE NIPPLES.



THREADED HOSE NIPPLE

Size		Piece No.	Price
Hose	Pipe		
1 3/8"	x 1 1/4"	46223	\$.12
1 3/8"	x 1"	46272	.12
1 1/8"	x 1 1/4"	46164	.12
1 1/8"	x 1"	46175	.12
1 1/8"	x 3/4"	46169	.10
3/4"	x 1"	47811	.12
3/4"	x 3/4"	7968	.10
3/4"	x 1/2"	8417	.10

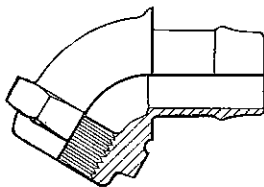
TAPPED HOSE NIPPLES.



TAPPED HOSE NIPPLE

Size		Piece No.	Price
Hose	Pipe		
1 3/8"	x 1 1/4"	46273	\$.20
1 1/8"	x 1"	46180	.15
1 1/8"	x 3/4"	46178	.12
3/4"	x 1"	15229	.15
3/4"	x 3/4"	14773	.12

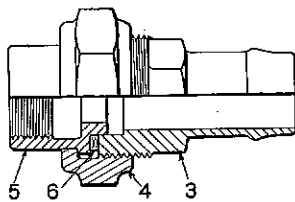
ANGLE HOSE NIPPLES.



ANGLE HOSE NIPPLE

Size		Piece No.	Price
Hose	Pipe		
1 3/8"	x 3/4"	46224	\$.15
1 1/8"	x 1"	46162	.15
1 1/8"	x 3/4"	46170	.15

UNION HOSE NIPPLES.



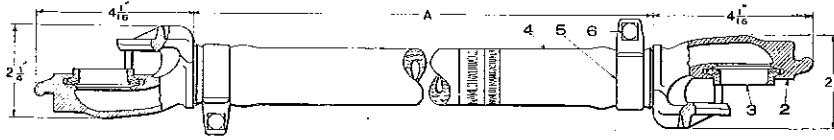
UNION HOSE NIPPLE

Size		Piece Numbers									
Hose	Pipe	Complete Pc. No.	Price	Nipple Only Ref. No. 3	Price	Union Nut Ref. No. 4	Price	Union Swivel Ref. No. 5	Price	Union Gasket Ref. No. 6	Price
1 3/8"	x 1 1/4"	46268	\$.50	46267	\$.25	2154	\$.12	2155	\$.12	2183	\$.03
1 3/8"	x 1"	47066	.50	46275	.25	1749	.10	1750	.10	1755	.02
1 1/4"	x 1 1/4"	46177	.50	46176	.25	2154	.12	2155	.12	2183	.03
1 1/4"	x 1"	46159	.35	46158	.15	1749	.10	1750	.10	1755	.02
1 1/4"	x 3/4"	46166	.35	46165	.12	3306	.10	3307	.10	3308	.02
1 1/4"	x 1/2"	46172	.25	46171	.12	2165	.05	2166	.04	2204	.01
1 1/2"	x 1"	24850	.35	15225	.15	1749	.10	1750	.10	1755	.02
1 1/2"	x 3/4"	19923	.35	8647	.12	3306	.10	3307	.10	3308	.02
1 1/2"	x 1/2"	24036	.25	13183	.12	2165	.05	2166	.04	2204	.01

Orders must give **PIECE NUMBER** and **NAME** of part wanted.

HOSE JUMPERS.

Subject to Quotation

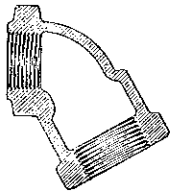


Pc. No.	Type of Coupl.	Dia. of Hose	A
19319	EP3	3"	22"
20093	EP3	3 1/2"	30"
19315	EP3	3 3/4"	36"
34000	EP3	3 1/2"	120"
19320	LP3	3"	22"
20096	LP3	3 1/2"	30"
19314	LP3	3 3/4"	36"
41032	LP3	3 1/2"	61"
40342	LP3	3 1/2"	66"

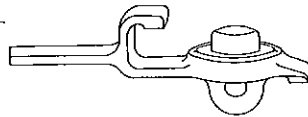
Hose Jumpers, Complete	*EP-3 Coupling	†LP-3 Coupling	Price Each	Net Weight Lbs. Each
3" x 22" Hose Jumper	19319	19320	\$2.50	4 1/2
3" x 30" Hose Jumper	20093	20096	2.90	5
3" x 36" Hose Jumper	19315	19314	3.20	5 1/2
3" x 61" Hose Jumper	41032	4.45	10
3" x 66" Hose Jumper	40342	4.70	11
4" x 120" Hose Jumper	34000	7.35	20

Ref. No.	Hose Jumpers, Details	Piece No.	Price
2	EP-3 Hose Coupling, complete	11122	Per Pair \$1.25
2	LP-3 Hose Coupling, complete	13387	" " 1.25
3	Hose Coupling Gasket	3279	Each .04
4	3" x 22" Hose	8643	" "
4	3 1/2" x 30" Hose	20092	" "
4	3 3/4" x 36" Hose	19316	" "
4	3 1/2" x 61" Hose	41031	" "
4	3 1/2" x 66" Hose	41307	" "
4	3 1/2" x 120" Hose	35424	" "
5	Hose Clamp	31104	" .04
6	Hose Clamp Bolt and Nut	15884	" .01

ANGLE FITTINGS.



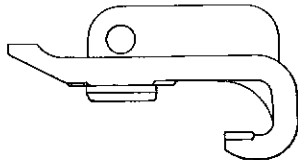
Pc. No.	Size	Price
3788	1 1/4" x 1 1/4"	\$.15
3819	1" x 1 1/4"	.12
12672	1" x 1"	.20
12140	3/4" x 1"	.20
2237	3/4" x 3/4"	.10
12262	3/4" x 3/4"	.15



DUMMY COUPLINGS.

Pc. No.	Type	Price
20816	E and L Dummy Coupling	\$.10
20806	F Dummy Coupling	.10
20810	H Dummy Coupling	.10
20818	M Dummy Coupling	.10

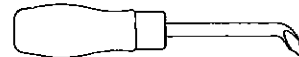
DUST STOPPER.



The E and L Dust Stopper is used with ET-3 and LT-3 Hose Couplings.
 Piece No. 8496. E and L Dust Stopper Price, \$.20

CLEANING TOOL.

Piece No. 46096. Coupling Groove Cleaning Tool Price, \$.50



PACKING AND SHIPPING—STANDARD PRACTICE.

We strongly recommend that all orders specify material in quantities conforming to our standard practice in boxing and packing. This will not only assist us in filling orders promptly but such original packages should prove of advantage to railroad storekeepers and others through greater convenience and economy in handling, ease of inventory, etc. The Hose and Couplings cataloged herein are packed for shipment as follows:

Material	Pc. No.	Number per Box	Shipping Weight
1 3/8" x 22" Hose with FP-5 Coupling	46242	50	370 lbs.
FP-5 Hose Coupling	46100	100	275 lbs.
FP-4 Hose Coupling	46126	100	270 lbs.
HP-4 Hose Coupling	46102	100	270 lbs.
1 3/8" x 22" Hose Only	2463	100	230 lbs.
1 1/4" x 22" Hose Only	2243	100	190 lbs.
1 3/8" x 1 1/4" Hose Nipples	46223	250	290 lbs.
1 3/8" Hose Clamps	26378	1000	235 lbs.
1 1/8" Hose Clamps	28221	1000	225 lbs.
Hose Coupling Gasket	3279	4000	125 lbs.

NOTE A—Dummy Couplings can be used with any size of Hose Coupling in which the first letter in the designation is the same as the type letter of the Dummy Coupling.

*NOTE B—For brake pipe connection where piping is attached to swinging drawbar.

†NOTE C—For control or reservoir pipe connection where piping is attached to swinging drawbar.

**NOTE D—Prices will be quoted upon application.

Orders must give PIECE NUMBER and NAME of part wanted.